



## **FRANZ KLINE (1910-1962)**

### **Untitled, #7246**

Signed lower left, "Kline"

oil on paper laid on board

18 1/8 x 23 1/4 in. (24 3/4 x 30 x 2 in.)

46.04 x 59.06 cm (62.87 x 76.2 x 5.08 cm)

c. 1958

46024

### **PROVENANCE:**

Dr. Theodore Edlich, Jr.

Kay Hillman, (Private dealer), New York, 1978

Pace Gallery, acquired from above

Christie's, early 1980's

Private Collection, Atlanta, acquired from above

Franz Kline, in full Franz Rowe Kline, (born May 23, 1910, Wilkes-Barre, Pa., U.S.—died May 13, 1962, New York, N.Y.), American artist who was one of the leading painters of the post-World War II Abstract Expressionist movement.

Kline studied at Boston University (1931–35) and at the Heatherley School of Art, London (1937–38), settling in New York City in the latter year. He was originally a representational painter, working in a style that merged Cubism and social realism. But in 1949, after viewing some of his black-and-white sketches enlarged by a projector, he realized their potential impact as large, abstract compositions. He began immediately to develop a highly personal form of Abstract Expressionism, a style of art based on the more or less spontaneous expression in abstract design of the artist's psychic states. Within a phenomenally short period of time, he mastered the new style, producing such masterpieces as *Nijinsky (Petrouchka)* (c. 1950) almost immediately. Using inexpensive commercial paints and large house painter's brushes, he built graphic networks of rough but controlled bars of black paint on white backgrounds, creating positive shapes with the white areas as well as with the black strokes.

Paintings such as *Mahoning* (1956) are characteristically of such large dimensions that the total effect is one of majesty and power. In the late 1950s Kline introduced colour into his paintings. Before his death, his work assumed a new direction in the extreme simplicity and elegance of huge, carefully balanced masses.

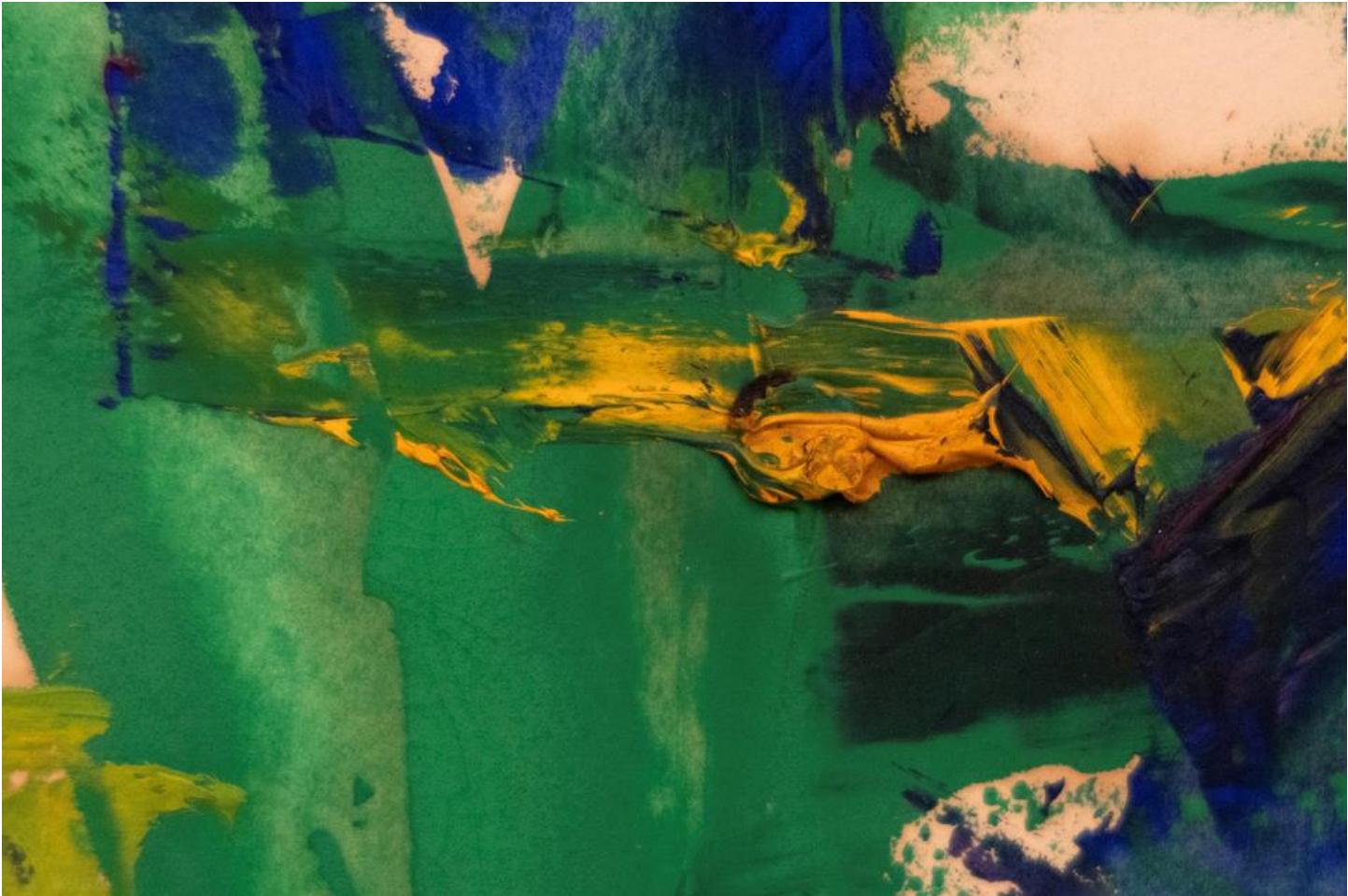
(britannica.com)

The information and material herein represents Gallery's best efforts and understanding of the current history and scholarship with respect to the provenance of the Work(s) of Art described and is not part of any warranty.





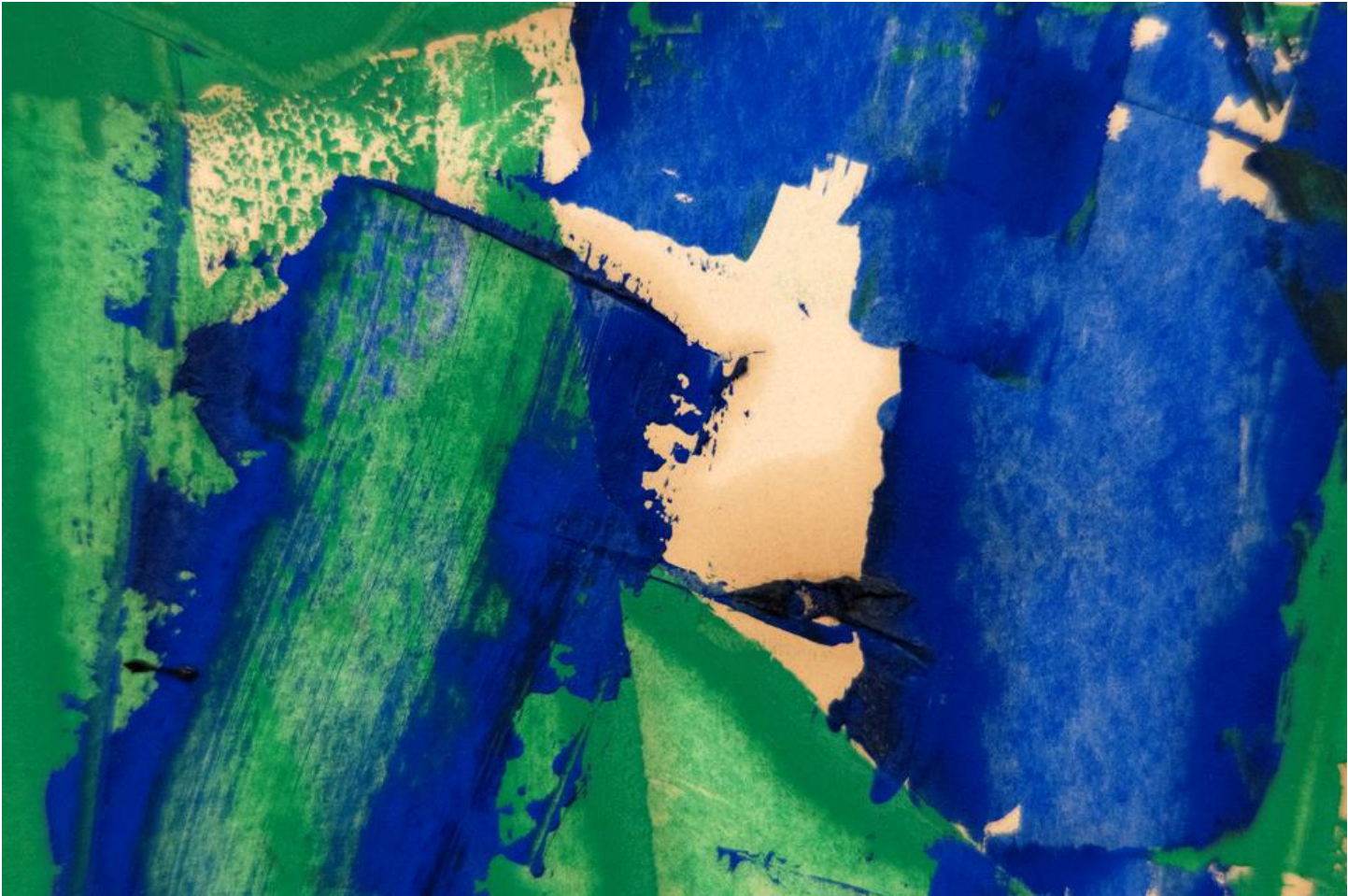




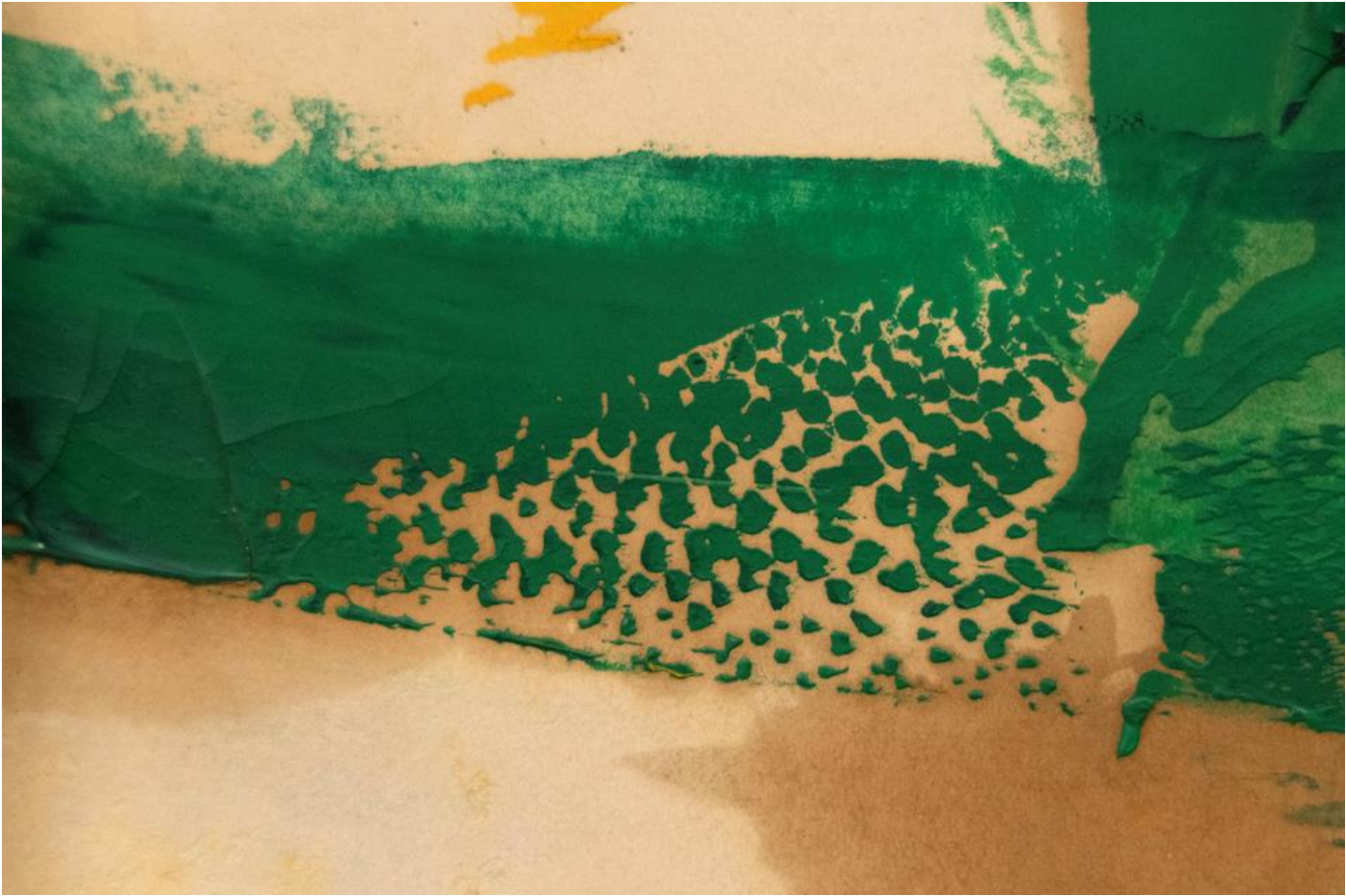


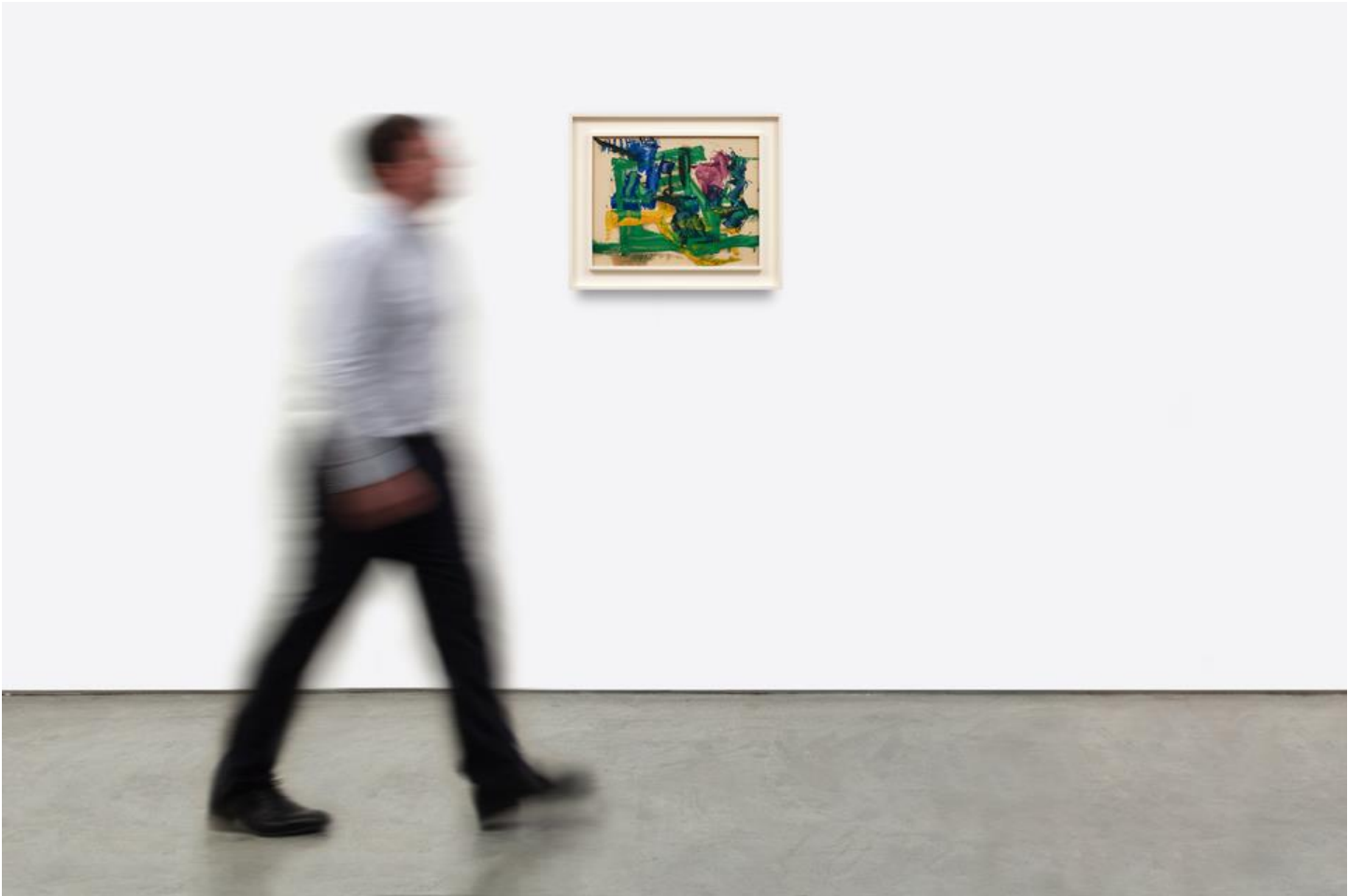














THE PRICE GALLERY  
BY THE MUSEUM OF MODERN ART  
1100 FIFTH AVENUE, 5TH FLOOR  
NEW YORK, N.Y. 10028  
TEL: 212 850 8000

Optium  
For Windows (and Linux)  
Optium is a...  
For Windows (and Linux)  
Optium is a...  
For Windows (and Linux)  
Optium is a...