

HENRI MATISSE (1869-1954)

Standing Nude

Signed in pencil, lower right, "Henri Matisse"

charcoal on paper

13 1/2 x 9 in. (19 3/8 x 14 1/2 x 1 3/4 in.)

34.29 x 22.86 cm (49.21 x 36.83 x 4.44 cm)

c. 1904-1907

46081

PROVENANCE:

Private Collection

EXHIBITION:

Zurich, Switzerland, Kunsthaus Zurich, *Matisse - Metamorphoses*, August 30, 2019 - December 8, 2019, no. 47

LITERATURE:

Kunsthaus Zurich & Musee Matisse, *Matisse - Metamorphoses*, Zurich, Switzerland, 2019, no. 47 (illustrated p. 175)

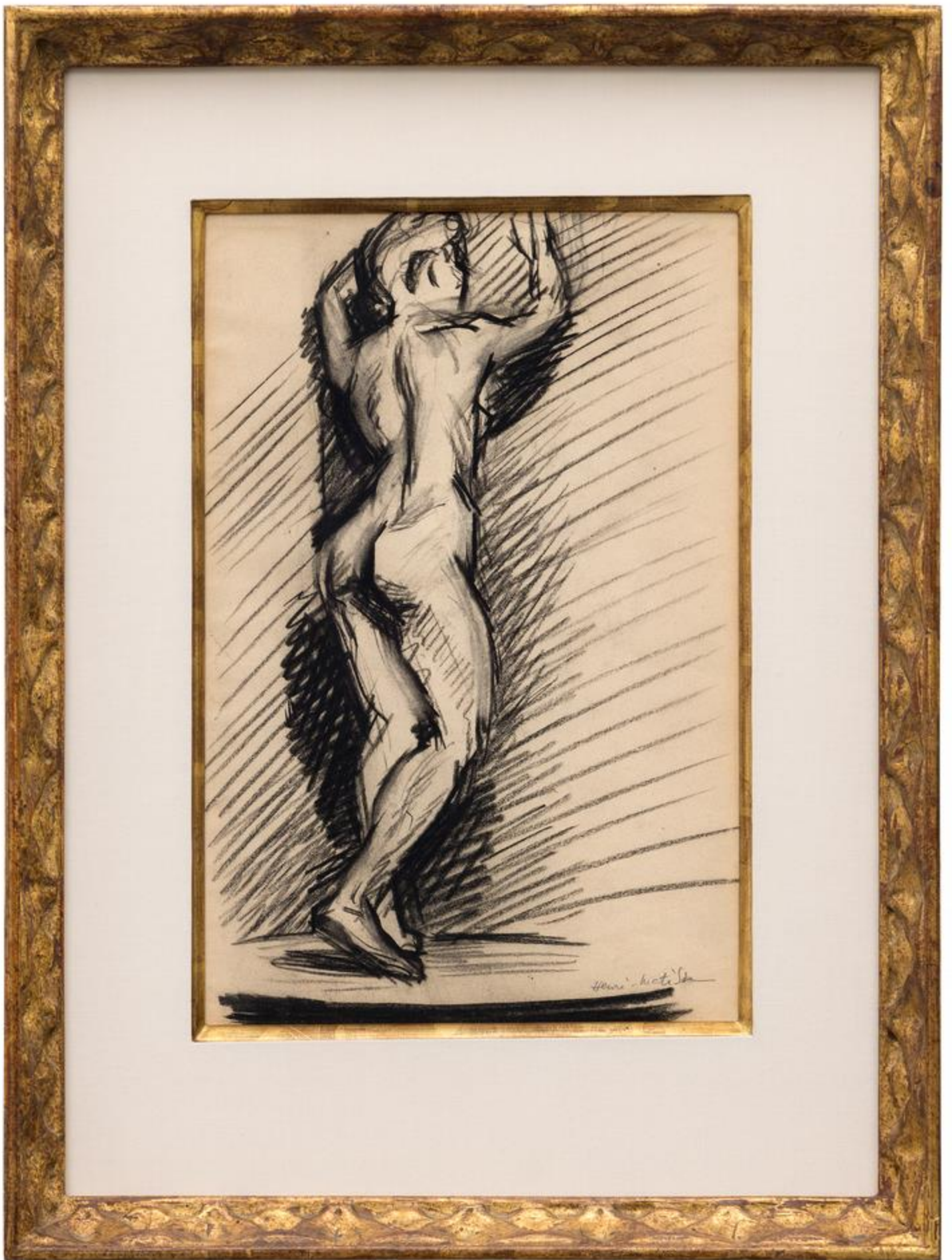
Henri Émile Benoît Matisse was a French artist, known for both his use of colour and his fluid and original draughtsmanship. He was a draughtsman, printmaker, and sculptor, but is known primarily as a painter. Matisse is commonly regarded, along with Pablo Picasso, as one of the artists who best helped to define the revolutionary developments in the visual arts throughout the opening decades of the twentieth century, responsible for significant developments in painting and sculpture.

The intense colorism of the works he painted between 1900 and 1905 brought him notoriety as one of the Fauves (wild beasts). Many of his finest works were created in the decade or so after 1906, when he developed a rigorous style that emphasized flattened forms and decorative pattern. In 1917, he relocated to a suburb of Nice on the French Riviera, and the more relaxed style of his work during the 1920s gained him critical acclaim as an upholder of the classical tradition in French painting. After 1930, he adopted a bolder simplification of form. When ill health in his final years prevented him from painting, he created an important body of work in the medium of cut paper collage.

His mastery of the expressive language of colour and drawing, displayed in a body of work spanning over a half-century, won him recognition as a leading figure in modern art.

(www.tate.org.uk)

The information and material herein represents Gallery's best efforts and understanding of the current history and scholarship with respect to the provenance of the Work(s) of Art described and is not part of any warranty.



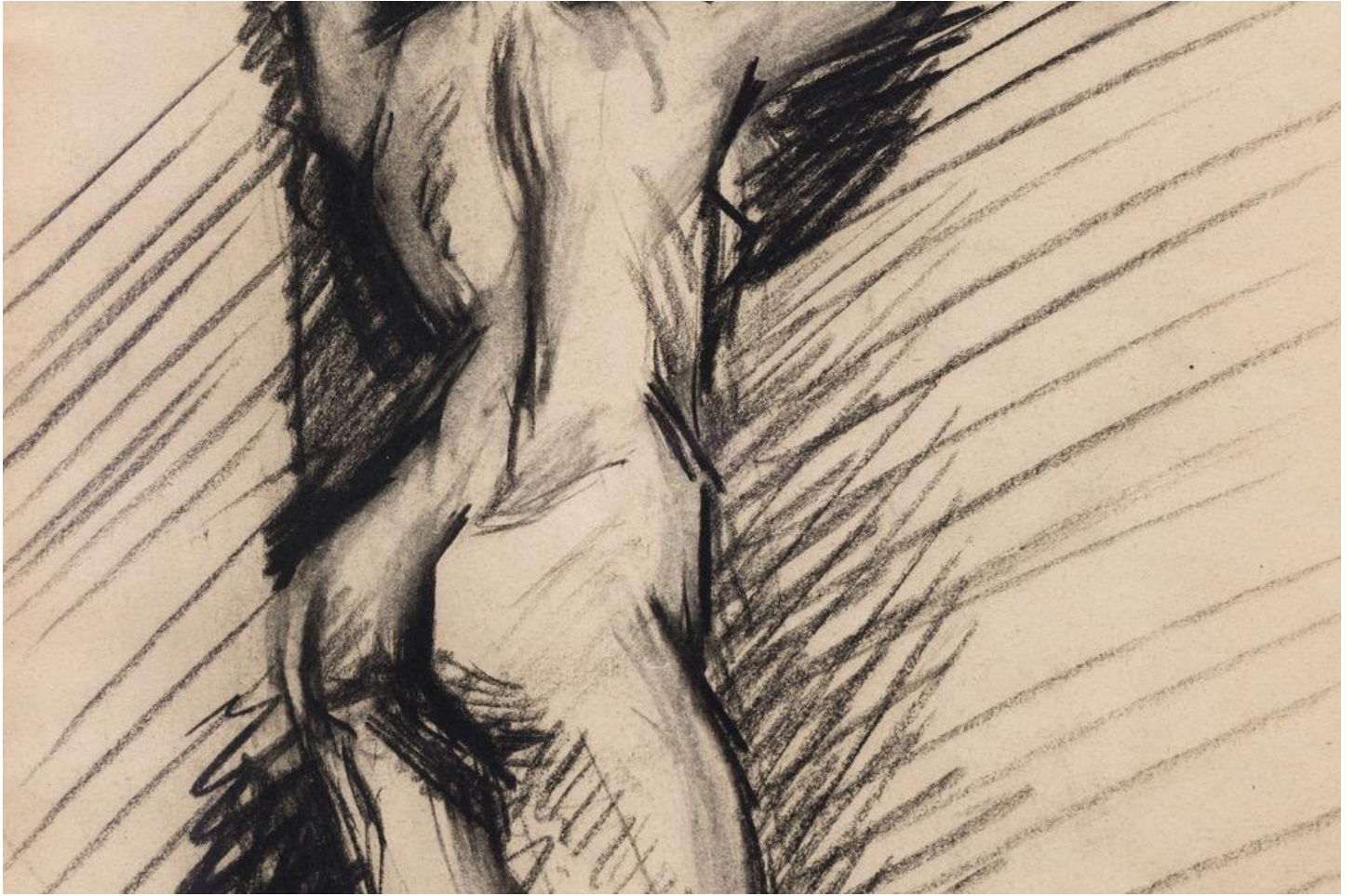
Herrn. Kati. Sch.



Henri-Matisse

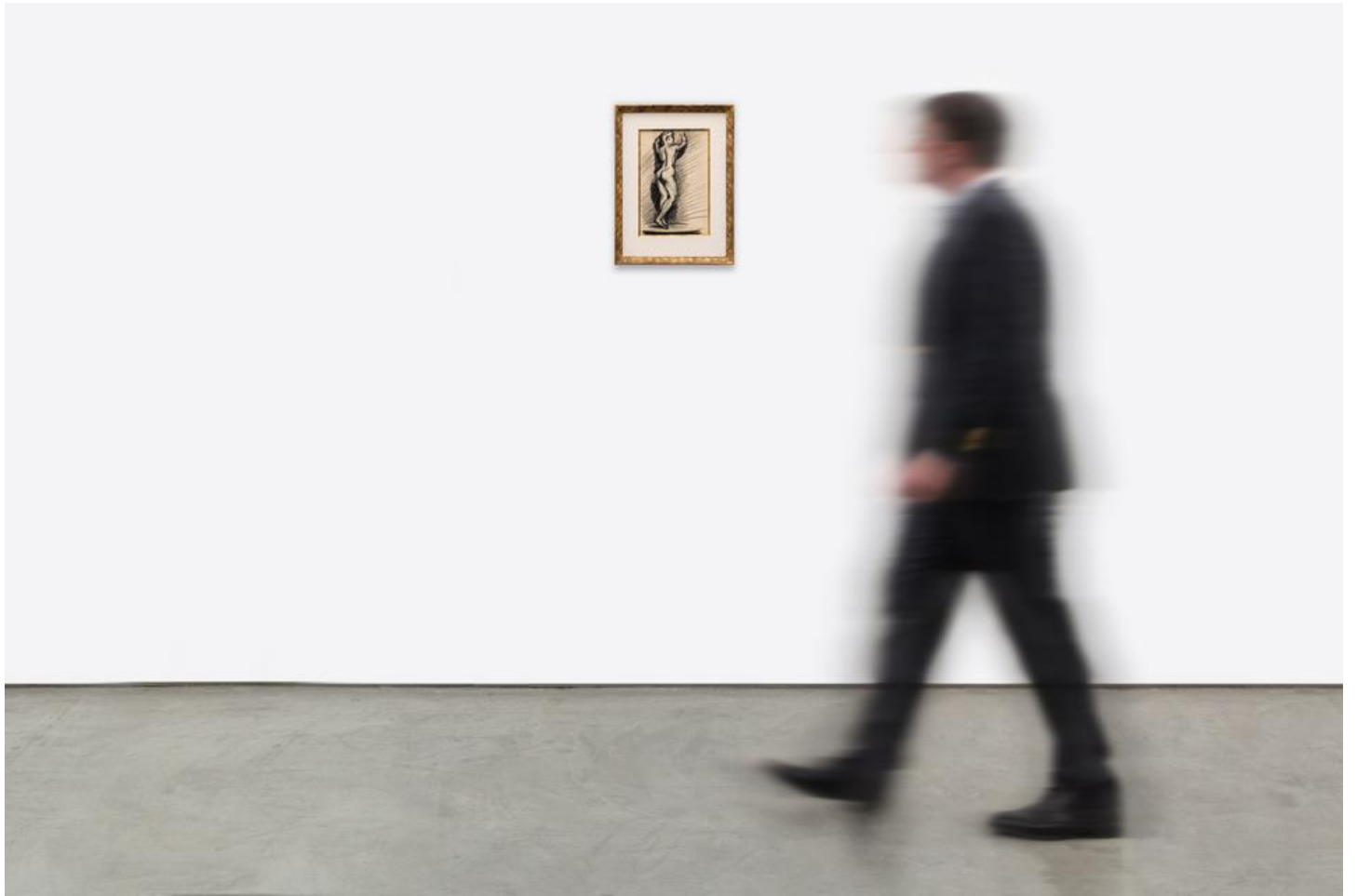












92892704862 - Prints and Drawings



ILE2007.3.11

Yale University Art Gallery

Mailing Address: Box 2006, New Haven, Connecticut 06520
Shipping Address: 201 York Street, New Haven, Connecticut 06511

Artist: Henri Matisse Acc. No.: ILE2007.3.11

Title: Standing Nude, ca. 1904-7

Medium: Charcoal

Size: 13 1/2 x 9"

**Do not unframe without permission from
Yale University Art Gallery Registrar, Telephone: (203) 432-0603**

Handwritten: 2/28

LUCIEN GOLDSCHMIDT, Inc.

1117 MADISON AVENUE

NEW YORK, N. Y. 10028

Art & Fine Books
Periodicals
Prints & Drawings

MATISSE (Henri). Standing female nude
seen from the back. Original charcoal
drawing, signed, 13 1/2 x 9 inches.

A very forceful study executed between 1904-07
and connected with the sculptures of females
seen from the back (in the garden of the Museum
of Modern Art).

CB150

**OPTIMUM MUSEUM ACRYLIC
U.V. FILTERING PLEXIGLAS - DO NOT TAPE**

This object must be installed in an environment free of natural light.
All light sources must be filtered for UV radiation, and must not exceed
5 footcandles (50 lux) unless otherwise noted in loan contract.
Relative humidity levels of 50% +/- 5% must be maintained.
Temperature of 70°F (20°C) +/- 5° must be maintained.

Please wrap in polyethylene for transport.

DO NOT UNFRAME
without permission of Yale University Art Gallery Registrar
203.432.0604 • 203.432.0605
P.O. Box 208271 • New Haven, CT 06520-8271

Handwritten: ILE 2007.3.11
OPTIMUM MUSEUM PLEXIGLAS